

UNITED STATES PUBLIC LAND SURVEY SECTION OR QUARTER SECTION CORNER RECORD

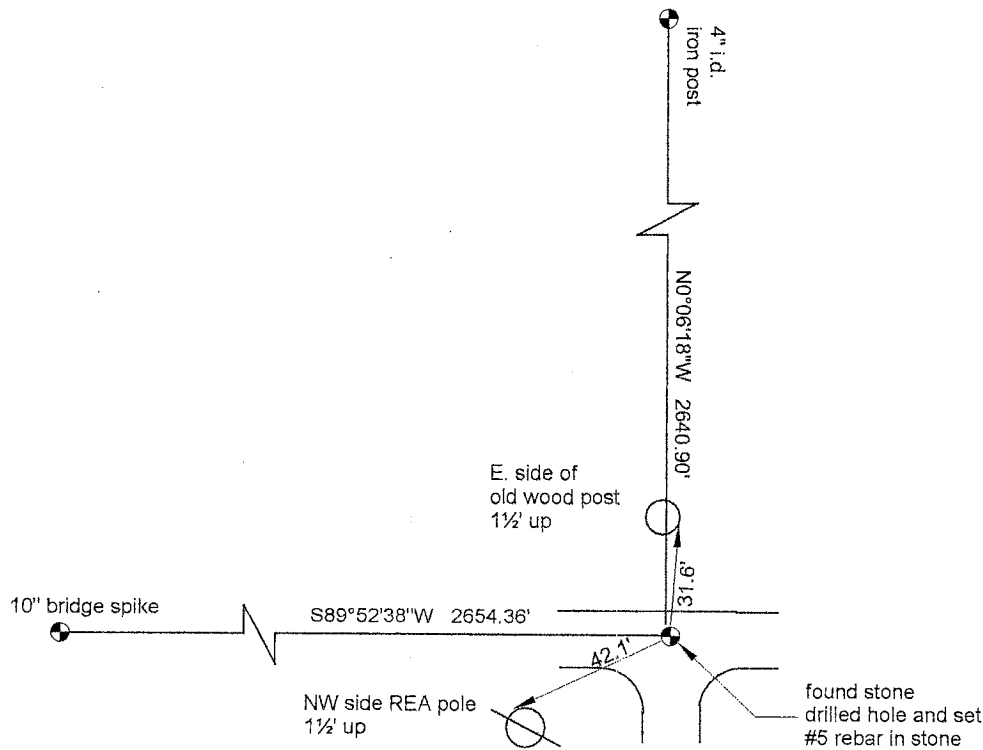
(establish)
(restore)

I hereby certify that on the 18th day of August, 2009, I did (find) the SE corner of Section 30, Township 105, Range 40, West of the 5th Principal Meridian which was evidenced by a gray granite stone in center of road intersection 1½ ft. deep.

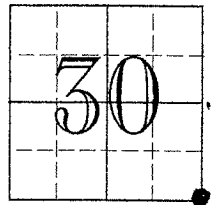
and I further certify that to perpetuate the location of such corner I did at the exact location thereof place a permanent marker consisting of 22" long #5 rebar set in stone

I further certify that I established reference or witness monuments consisting of REA, old wood post, S¼ corner, E¼ corner

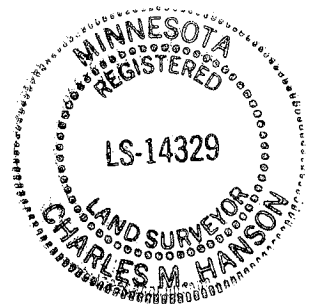
which reference or witness monuments are located as shown on the accompanying sketch.



Section Diagram



Legend:
● = corner location



Charles M. Hanson

 Charles M. Hanson
 Registration No. 14329 State of Minnesota

Dated at Sioux Falls, South Dakota on this 21st day of August, 2009